



Immigration in **TURKEY & EUROPE**

**Dr. Aysegul GUNER, Altinbas University,
Istanbul, TURKEY**





CANADA

UNITED STATES

MEXICO

CUBA

ECUADOR

PERU

CHILE

ARGENTINA

BRAZIL

BOLIVIA

PARAGUAY

URUGUAY

GATEMALA

EL SALVADOR

HONDURAS

NICARAGUA

COSTA RICA

PANAMA

VENEZUELA

GUYANA

SURINAME

FRENCH GUIANA

NORWAY

SWEDEN

FINLAND

IRELAND

NETHERLANDS

GERMANY

POLAND

FRANCE

ITALY

ROMANIA

PORTUGAL

SPAIN

WESTERN SAHARA

MOROCCO

ALGERIA

LIBYA

MAURITANIA

MALI

NIGER

CHAD

THE GAMBIA

GUINEA

SIERRA LEONE

LIBERIA

EGYPT

SUDAN

ETHIOPIA

DR CONGO

ANGOLA

ZAMBIA

NAMIBIA

BOTSWANA

SOUTH AFRICA

EGYPT

ETHIOPIA

SOMALIA

KENYA

TANZANIA

ANGOLA

ZAMBIA

MALAWI

MOZAMBIQUE

SWAZILAND

LESOTHO

SWAZILAND

LESOTHO

LESOTHO

LESOTHO

LESOTHO

LESOTHO

LESOTHO

LESOTHO

LESOTHO

LESOTHO

LESOTHO

LESOTHO

LESOTHO

LESOTHO

LESOTHO

LESOTHO

LESOTHO

LESOTHO

LESOTHO

LESOTHO

LESOTHO

LESOTHO

LESOTHO

LESOTHO

LESOTHO

LESOTHO

LESOTHO

LESOTHO

LESOTHO

LESOTHO

LESOTHO

LESOTHO

LESOTHO

LESOTHO

LESOTHO

LESOTHO

LESOTHO

LESOTHO

LESOTHO

LESOTHO

LESOTHO

LESOTHO

LESOTHO

LESOTHO

LESOTHO

LESOTHO

LESOTHO

LESOTHO

LESOTHO

LESOTHO

LESOTHO

LESOTHO

LESOTHO

LESOTHO

LESOTHO

LESOTHO

LESOTHO

LESOTHO

LESOTHO

LESOTHO

LESOTHO

LESOTHO

LESOTHO

LESOTHO

LESOTHO

LESOTHO

LESOTHO

LESOTHO

LESOTHO

LESOTHO

LESOTHO

LESOTHO

LESOTHO

LESOTHO

LESOTHO

LESOTHO

LESOTHO

LESOTHO

LESOTHO

LESOTHO

LESOTHO

LESOTHO

LESOTHO

LESOTHO

LESOTHO

LESOTHO

LESOTHO

LESOTHO

LESOTHO

LESOTHO

LESOTHO

LESOTHO

LESOTHO

LESOTHO

LESOTHO

LESOTHO

LESOTHO

LESOTHO

LESOTHO

LESOTHO

LESOTHO

LESOTHO

LESOTHO

LESOTHO

LESOTHO

LESOTHO

LESOTHO

LESOTHO

LESOTHO

LESOTHO

LESOTHO

LESOTHO

LESOTHO

LESOTHO

LESOTHO

LESOTHO

LESOTHO

LESOTHO

LESOTHO

LESOTHO

LESOTHO

LESOTHO

LESOTHO

LESOTHO

LESOTHO

LESOTHO

LESOTHO

LESOTHO

LESOTHO

LESOTHO

LESOTHO

LESOTHO

LESOTHO

LESOTHO

LESOTHO

LESOTHO

LESOTHO

LESOTHO

LESOTHO

LESOTHO

LESOTHO

LESOTHO

LESOTHO

LESOTHO

LESOTHO

LESOTHO

LESOTHO

LESOTHO

LESOTHO

LESOTHO

LESOTHO

LESOTHO

LESOTHO

LESOTHO

LESOTHO

LESOTHO

LESOTHO

LESOTHO

LESOTHO

LESOTHO

LESOTHO

LESOTHO

LESOTHO

LESOTHO

LESOTHO

LESOTHO

LESOTHO

LESOTHO

LESOTHO

LESOTHO

LESOTHO

LESOTHO

LESOTHO

LESOTHO

LESOTHO

LESOTHO

LESOTHO

LESOTHO

LESOTHO

LESOTHO

LESOTHO

LESOTHO

LESOTHO

LESOTHO

LESOTHO

LESOTHO

LESOTHO

LESOTHO

LESOTHO

LESOTHO

LESOTHO

LESOTHO

LESOTHO

LESOTHO

LESOTHO

LESOTHO

LESOTHO

LESOTHO

LESOTHO

LESOTHO

LESOTHO

LESOTHO

LESOTHO

LESOTHO

LESOTHO

LESOTHO

LESOTHO

LESOTHO

LESOTHO

LESOTHO

LESOTHO

LESOTHO

LESOTHO

LESOTHO

LESOTHO

LESOTHO

LESOTHO

LESOTHO

LESOTHO

LESOTHO

LESOTHO

LESOTHO

LESOTHO

LESOTHO

LESOTHO

LESOTHO

LESOTHO

LESOTHO

LESOTHO

LESOTHO

LESOTHO

LESOTHO

LESOTHO

LESOTHO

LESOTHO

LESOTHO

LESOTHO

LESOTHO

LESOTHO

LESOTHO

LESOTHO

LESOTHO

LESOTHO

LESOTHO

LESOTHO

LESOTHO

LESOTHO

LESOTHO

LESOTHO

LESOTHO

LESOTHO

LESOTHO

LESOTHO

LESOTHO

LESOTHO

LESOTHO

LESOTHO



✦ **Bucharest**
ROMANIA

BULGARIA

RUSSIA

GEORGIA

ARMENIA

IRAN

SYRIA

CYPRUS

LEBANON

IRAQ

GREECE

GREECE

Black Sea

Mediterranean Sea

TURKEY

- ✦ National capital
- ⊙ Province capital
- Town
- ✈ Airport
- International boundary
- Express way
- Main road
- Railroad

0 50 100 150 200 km

0 50 100 mi



○ Constanta

○ Varna

○ Burgas

○ Edirne

○ Kirklareli

○ Tekirdag

○ Çanakkale

○ Edremit

○ Bergama

○ Soma

○ Manisa

○ Izmir

○ Aydin

○ Denizli

○ Didim (Didyma)

○ Bodrum

○ Marmaris

○ Fethiye

○ Kas

○ Çanakkale

○ Bandirma

○ Bursa

○ Balikesir

○ Edremit

○ Bergama

○ Soma

○ Manisa

○ Izmir

○ Aydin

○ Denizli

○ Didim (Didyma)

○ Bodrum

○ Marmaris

○ Fethiye

○ Kas

○ Kumluca

○ Finike

○ Antalya

○ Manavgat

○ Karaman

○ Anamur

○ Silifke

○ Mersin

○ Yumurtalik

○ Adana

○ Osmaniye

○ Gaziantep

○ Sanliurfa

○ Mardin

○ Nusaybin

○ Siirt

○ Bitlis

○ Tatvan

○ Van

○ Mus

○ Bingöl

○ Tunceli

○ Divrigi

○ Elazig

○ Malatya

○ Adyaman

○ Kahramanmaraş

○ Siverek

○ Batman

○ Diyarbakir

○ Siirt

○ Sirnak

○ Hakkâri

○ Agri

○ Iğdir

○ Agri Dagı (Mt. Ararat 5166 m)

○ Kars

○ Bayburt

○ Erzincan

○ Erzurum

○ Artvin

○ Ardahan

○ Akyaka

○ Batumi

○ Sochi

○ Sukhumi

○ Trabzon

○ Rize

○ Gümüşhane

○ Ordu

○ Giresun

○ Samsun

○ Sinop

○ Kastamonu

○ Bartın

○ Zonguldak

○ Karabük

○ Bolu

○ Adapazari

○ Düzce

○ IZMİT

○ Yalova

○ Bursa

○ Balikesir

○ Edremit

○ Çanakkale

○ Edremit

○ Bergama

○ Soma

○ Manisa

○ Izmir

○ Aydin

○ Denizli

○ Didim (Didyma)

○ Bodrum

○ Marmaris

○ Fethiye

○ Kas

○ Kumluca

○ Finike

○ Antalya

○ Manavgat

○ Karaman

○ Anamur

○ Silifke

○ Mersin

○ Yumurtalik

○ Adana

○ Osmaniye

○ Gaziantep

○ Sanliurfa

○ Mardin

○ Nusaybin

○ Siirt

○ Bitlis

○ Tatvan

○ Van

○ Mus

○ Bingöl

○ Tunceli

○ Divrigi

○ Elazig

○ Malatya

○ Adyaman

○ Kahramanmaraş

○ Siverek

○ Batman

○ Diyarbakir

○ Siirt

○ Sirnak

○ Hakkâri

○ Agri

○ Iğdir

○ Agri Dagı (Mt. Ararat 5166 m)

○ Kars

○ Bayburt

○ Erzincan

○ Erzurum

○ Artvin

○ Ardahan

○ Akyaka

○ Batumi

○ Sochi

○ Sukhumi

○ Trabzon

○ Rize

○ Gümüşhane

○ Ordu

○ Giresun

○ Samsun

○ Sinop

○ Kastamonu

○ Bartın

○ Zonguldak

○ Karabük

○ Bolu

○ Adapazari

○ Düzce

○ IZMİT

○ Yalova

○ Bursa

○ Balikesir

○ Edremit

○ Çanakkale

○ Edremit

○ Bergama

○ Soma

○ Manisa

○ Izmir

○ Aydin

○ Denizli

○ Didim (Didyma)

○ Bodrum

○ Marmaris

○ Fethiye

○ Kas

○ Kumluca

○ Finike

○ Antalya

○ Manavgat

○ Karaman

○ Anamur

○ Silifke

○ Mersin

○ Yumurtalik

○ Adana

○ Osmaniye

○ Gaziantep

○ Sanliurfa

○ Mardin

○ Nusaybin

○ Siirt

○ Bitlis

○ Tatvan

○ Van

○ Mus

○ Bingöl

○ Tunceli

○ Divrigi

○ Elazig

○ Malatya

○ Adyaman

○ Kahramanmaraş

○ Siverek

○ Batman

○ Diyarbakir

○ Siirt

○ Sirnak

○ Hakkâri

○ Agri

○ Iğdir

○ Agri Dagı (Mt. Ararat 5166 m)

○ Kars

○ Bayburt

○ Erzincan

○ Erzurum

○ Artvin

○ Ardahan

○ Akyaka

○ Batumi

○ Sochi

○ Sukhumi

○ Trabzon

○ Rize

○ Gümüşhane

○ Ordu

○ Giresun

○ Samsun

○ Sinop

○ Kastamonu

○ Bartın

○ Zonguldak

○ Karabük

○ Bolu

○ Adapazari

○ Düzce

○ IZMİT

○ Yalova

○ Bursa

○ Balikesir

○ Edremit

○ Çanakkale

○ Edremit

○ Bergama

○ Soma

○ Manisa

○ Izmir

○ Aydin

A family migration story

Gagauz roots • Dobruja • Kavarna • Istanbul, 1945

Gagauzia
ancestral roots

Dobruja
first relocation

Kavarna
born in 1930
Romania then,
Bulgaria now

Istanbul
arrived in 1945
by boat "Datca"

Warm-up prompt for the room

How many present-day countries does this route cross?

From Gagauz ancestry to Dobruja, from Kavarna to Istanbul: one family story already contains borders, language shifts, changing states, and a sea crossing.

OTTOMAN VILAYETS 1905

- = Losses between 1878 & 1900
- = Under austrian occupation
- = Khedivate under british occupat.



RUSSIAN EMPIRE

AUSTRIA-HUNGARY

ITALY

ROMANIA

SERBIA

BULGARIA

Black Sea

MONTENEGRO

SELANIK

EDIRNE

ISTANBUL

KASTAMONU

TRABZON

Rome

Üsküdar

Üsküdar

MONASTIR (Serfice)

YANYA

CESAYIR

BURSA

ANKARA

SIVAS

ERZURUM

Kars

GREECE

AYDIN

KONYA

ADANA

MAMURET

AZIZ

DIYARBAKIR

VAN

Deylik

Tunes

Mediterranean Sea

KIRID

Kibris

IRAN

BEDUIN TRIBES

BEYRUT

DEYIREZZOR

BAGDAD

BASRA

TARABULUS

MISIR

Khedivate of Egypt

Mutessariflik of Alkods

Jerusalem

HECAZ (Hedjaz)

Sharifate of Meccah

ASIR

YEMEN

Sanaa

HECAZ (Hedjaz)

Aden

HASA

1360



BSS Filiz

Migration is old and new at the same time

Three images, three eras, one recurring question: who gets to move, and under what conditions?



1905
Ellis Island, Immigrant Landing Station, February 24, 1905.
Migration has always been bureaucratic, emotional, and political—not just demographic.



Since 1910
Family portrait
Behind every category—migrant, refugee, foreigner—there are households making survival decisions.



2016
Mediterranean rescue scene
What feels “contemporary” today has deep historical echoes: border control, fear, hope, and uneven rights.

Why Turkey and Europe belong in the same lecture

The Mediterranean is not a border line only—it is also a corridor, archive, and contact zone.



Turkey's significance

- • Neighbour to Syria, Iraq, Iran, the Caucasus, and the Black Sea
- • Connected to EU labour markets, visa politics, and asylum debates
- • A transit space for some, a long-term home for many

Turkey is often described as a “bridge” between regions. But bridges are not neutral: they channel movement, commerce, surveillance, and power.



Avrupa Haritası, Piri Reis, Kitab-ı Bahriye
(Bir Kopya) İstanbul Üniversitesi Kütüphanesi, No:6605
Map of Europe, Piri Reis, Kitab-ı Bahriye
the end of 16. Century) Library of Istanbul University, No:6605



Just a vocabulary check

Immigrant / migrant

A broad social term for someone living outside their previous place of habitual residence. It can include work, study, or family movement.

Refugee

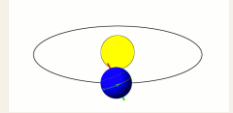
A legal category tied to protection from persecution, war, or violence. Recognition matters because rights depend on it.

Asylum seeker

Someone asking for refugee protection whose claim has not yet been decided.

Important distinction

The same person may be described socially as a migrant, legally as an asylum seeker, administratively as irregular, and emotionally as a parent trying to keep a family together. Categories help states govern; they do not capture the whole human story.

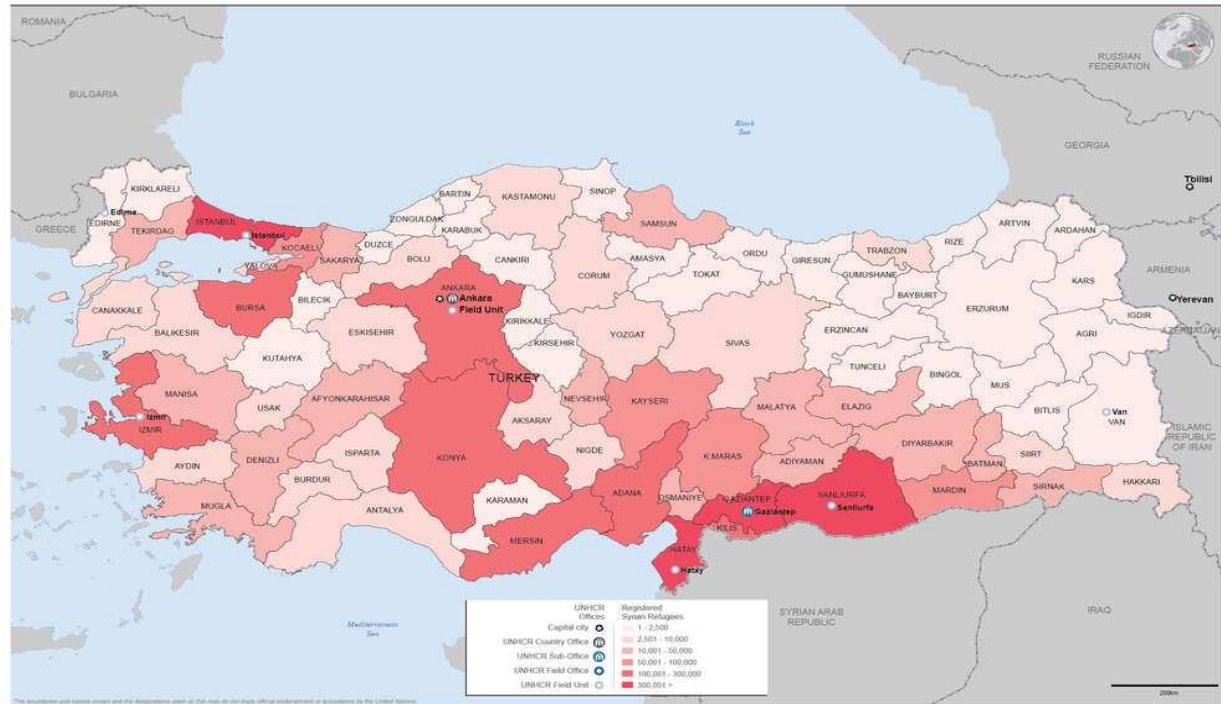


Turkey today: a country of protection, waiting, work, and return

Turkey is not only “transit.” For millions, it has been a place of long residence and everyday life.



UNHCR Turkey: Provincial Breakdown of Syrian Refugees in Turkey



2.6

million refugees hosted by Türkiye by mid-2025, including about 2.5 million Syrians under temporary protection.

2.38 million

Syrians under temporary protection in official PMM statistics (Nov 2025). The number has decreased from earlier peaks.

Urban reality

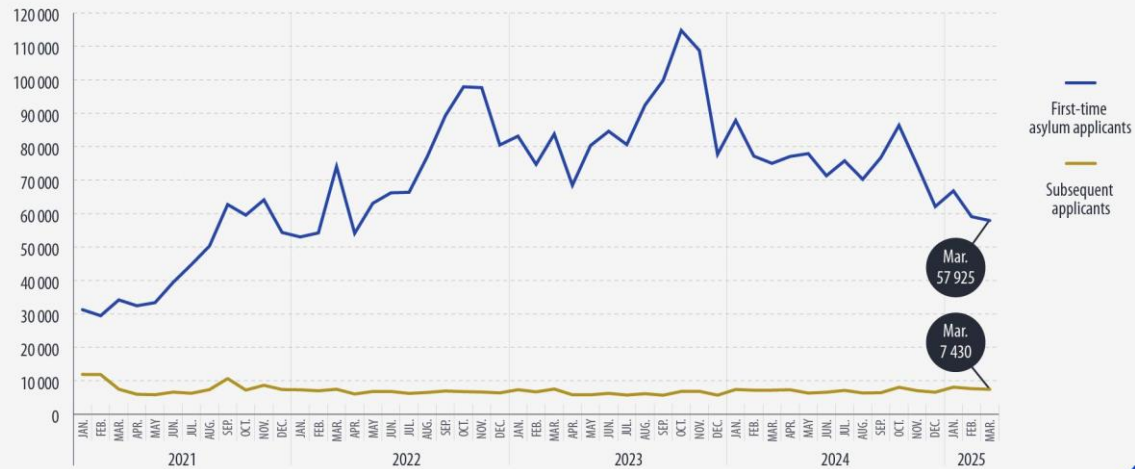
Most refugees in Turkey live in towns and cities, not camps—so migration is felt in housing, schools, labour markets, and municipal services.

Europe today: asylum is concentrated, uneven, and politically charged

The EU does not receive migration uniformly; a handful of states and routes carry much of the pressure.

First-time and subsequent asylum applicants in the EU, January 2021 - March 2025

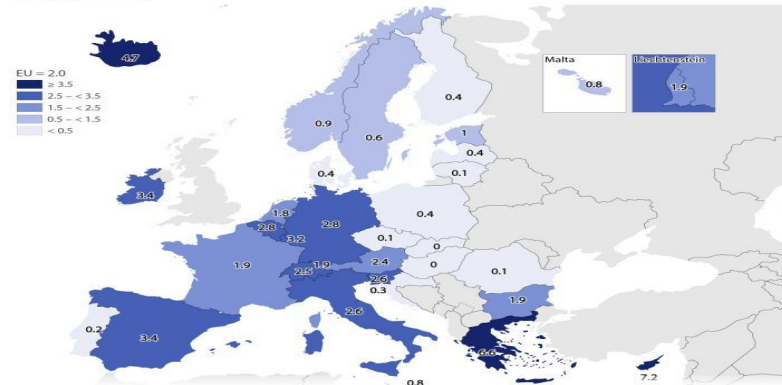
(number of applicants)



Cyprus: due to temporary derogations, data on subsequent applicants are not available until December 2023, therefore Cyprus is not included in the total calculated until December 2023.
Spain: provisional data used for March 2025.

eurostat

First-time asylum applicants per 1 000 people, 2024
(non-EU citizens)



eurostat
Portugal data for 2024 estimated due to missing data for December 2024.
Source: Eurostat (migr_asyapp1mp)

Administrative boundaries: © EuroGeographics © UN-FAO © Turkstat
Cartography: Eurostat - IMAGE, 03/2025

912,000

first-time asylum applicants in the EU in 2024, down 13% from 2023.

Top receiving countries in

2024

Germany 229,700

Spain 164,000

Italy 151,100

France 130,900

Greece 69,000

Per capita pressure

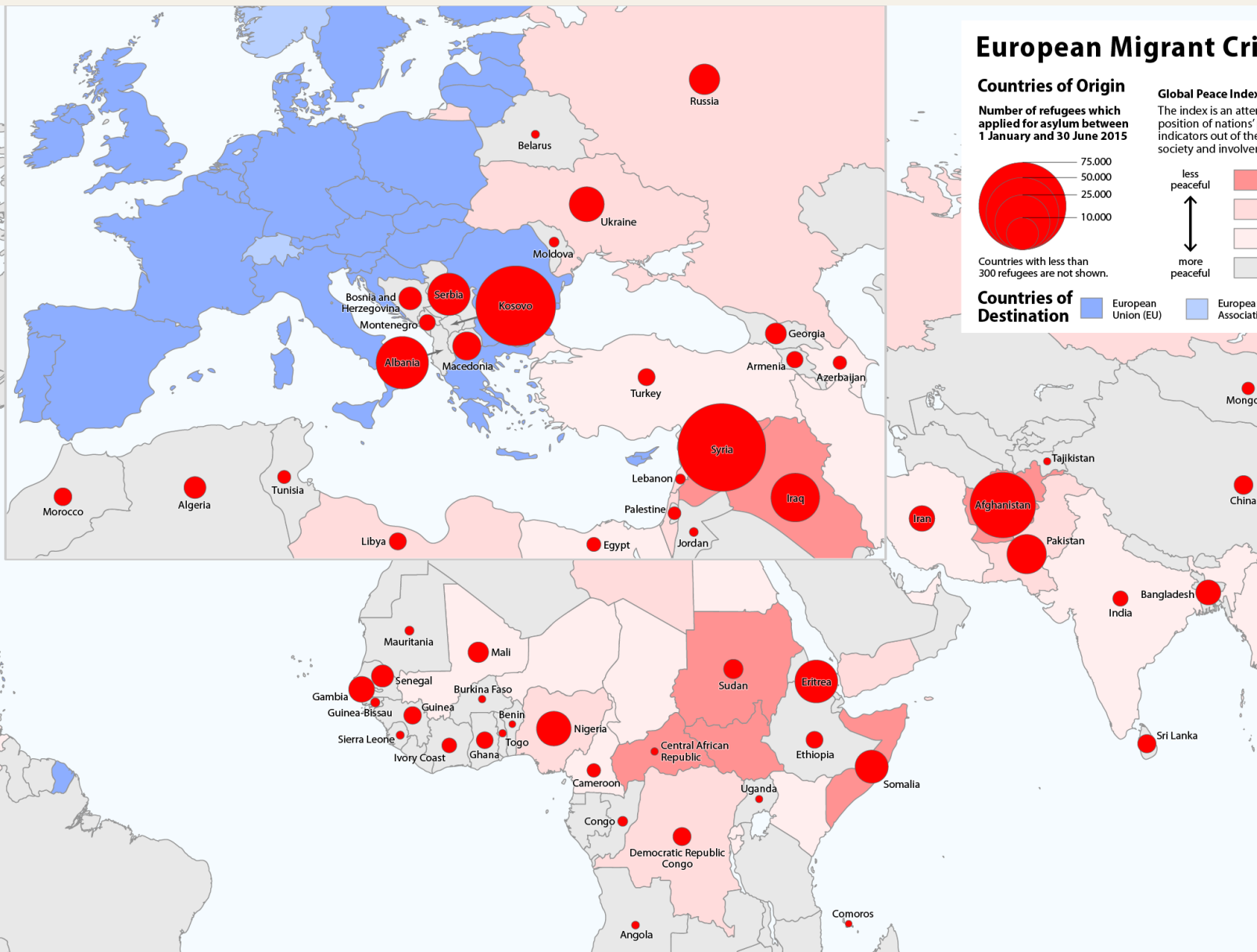
Cyprus had the highest rate in 2024: 7.2 first-time applicants per 1,000 residents. The EU average was about 2 per 1,000.

Interpretation

Absolute numbers and per-capita exposure tell different political stories. That is why the same EU migration debate looks different in Berlin, Madrid, Athens, and Nicosia.

Routes and risks: the Mediterranean is both passage and graveyard

When safe and legal pathways are narrow, dangerous crossings become more likely.



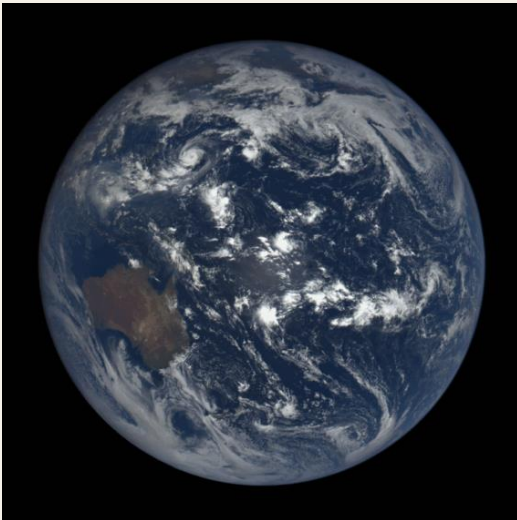
2,452 deaths and disappearances were documented in the Mediterranean in 2024 by IOM—making it the deadliest year on record there.



Analytical point
Border hardening does not erase movement; it often redistributes it toward more expensive, hidden, and risky routes.

Why people move: a migration system is never caused by only one thing

Conflict, family ties, labour demand, education, smuggling, and policy all interact.



1.

Protection

War, persecution, and state collapse push people across nearby borders first.

2. Family

networks

Relatives abroad lower risk and help newcomers navigate jobs and housing.

3. Labour &

study

Europe also pulls migrants through work shortages and universities.

4. Policy

choices

Visa rules, resettlement, border policing, regularisation, and return policies shape how movement happens—not whether desire to move exists.

5. Information

circuits

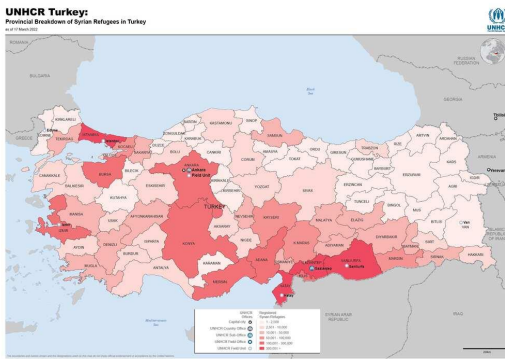
Phones, WhatsApp, smugglers, NGOs, and diaspora media all change the migration calculus in real time.

Turkey's policy model: temporary protection plus urban incorporation

Turkey combines emergency protection with long-term social questions that emergency frameworks were not designed to solve.

What has defined the model?

- Temporary Protection regime for Syrians
- Heavy municipal and urban-service burden
- Patchy labour market access and informality
- Schooling, health, and language as integration bottlenecks



Returns are politically central

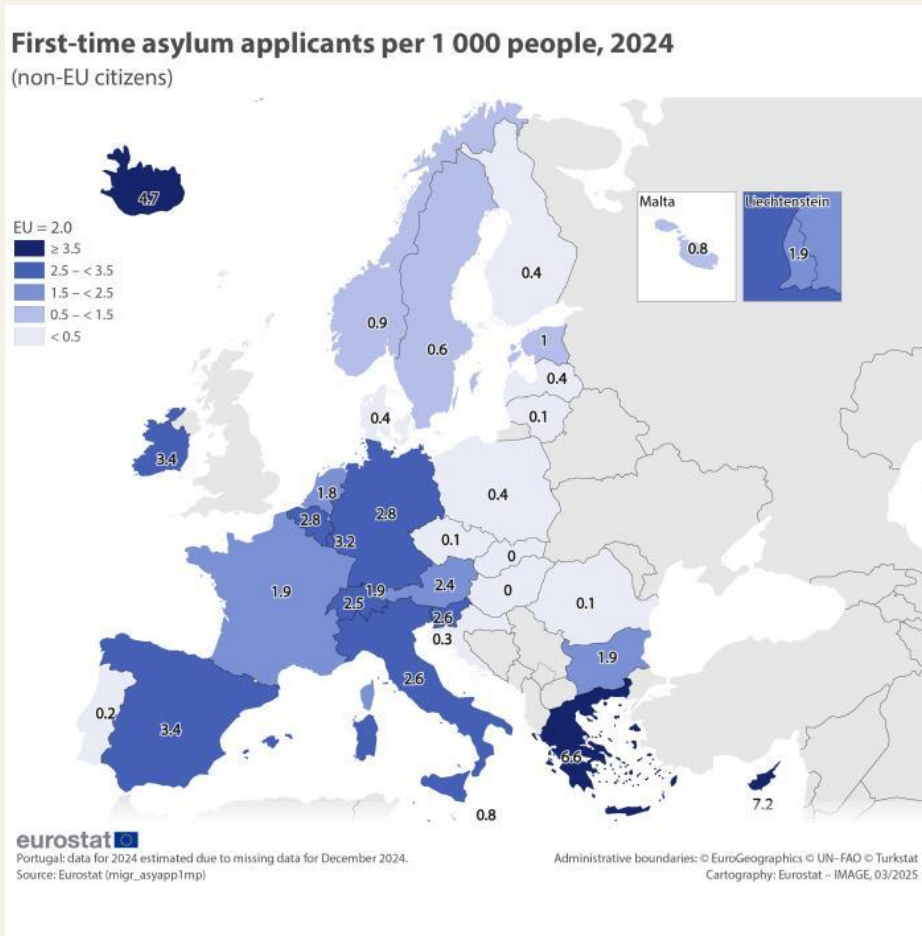
PMM reported that since 8 Dec 2024, 411,649 Syrians had returned, and cumulative voluntary returns since 2016 reached more than 1.15 million by Aug 2025.

The tension in Turkey is simple to state and hard to govern: a “temporary” framework has had to manage a very long social reality.



Europe's policy model: asylum governance meets labour demand and electoral politics

Europe debates migration as crisis even when it also depends on migration economically



Asylum & control

- Large differences between member states
- Slow procedures and high backlogs
- Border externalisation and burden-sharing disputes
- Public debate often centres on irregular entry

Backlog pressure

At the end of Dec 2025 there were 1.22 million pending asylum applications in the EU; Germany alone had 306,590 pending.

Work, study, and demographic need

OECD countries saw record permanent migration in 2023 (6.5 million), more than 2.4 million work permits/authorisations, and over 2.1 million new international student permits.

Europe is not debating one migration issue. It is debating at least three at once: asylum, irregular entry, and economically needed mobility.

What you should keep in view

The best migration analysis holds humanitarian, legal, economic, and political lenses together.



1. Never reduce migration to statistics alone

People move through institutions, but also through fear, hope, and obligation.



2. Integration is urban and everyday

Schools, landlords, transport, language, and wages are where policy becomes real.



3. Borders are historical, but never fixed in meaning

They can signal protection, exclusion, sovereignty, commerce, and memory all at once.

THANKS FOR LISTENING 😊

